

# COMPANY PROFILE





## **ABOUT FEDEMS**

FeDems Limited was founded to provide specialised Engineering services with 18 permanent professional staff, consisting of Architects, Engineers, Technical Support Staff, Legal Experts and Administrative Staff. We also have a pool of freelance professionals who work with us on demand. Our services are rendered to both private and public sector clients. The expertise of our employees makes FEDEMS a leader in providing solutions through integrated project delivery techniques.

## **OUR VISION**

"To become the leading engineering solutions provider in Africa."

## **OUR MISSION**

"To combine all problem solving skills to provide solutions that are functionally sound, economical and practical while consulting for our clients."

## **FIRM PHILOSOPHY AND METHODOLOGY**

The proposed methodology of FEDEMS Ltd for our clients is structured to control the time, cost and quality of the project, thus enhancing the success of the project within the agreed scope. We will be accountable for ensuring that the allocated resources are used appropriately to complete the project.



**The following is a detailed list of activities included in the services that can be provided by our team**

## **DESIGN / DESIGN REVIEW**

The structure of FeDems Ltd allows us to excel in our ability to provide design services. Led by our senior design architects and engineers, our team will first take the client's brief, requirements and concept proposal and then develop with the Client the development components of the project. This will be a Statement of Owner's Requirements. These documents will serve as the basis of design for the Project, and eventually for the preparation of working drawings to carry out the works.

All reviews will take into consideration our strategy to favour local economic benefit, defining packages in such a way as to allow for as much participation as possible by both foreign and local contractors, suppliers and labour, and to maximize the transfer of state of the art construction technology.

## CONSTRUCTION SUPERVISION



At FeDems, we help you to complete your project on time and on budget, while meeting all relevant regulations and quality standards.

FeDems Ltd will during the construction stage:

- Submit monthly written reports including budget and scheduling information.
- Maintain complete and updated project files, drawing and specifications.
- Provide construction supervision to perform defined activities.
- Recommend payment of Contractor invoices.
- Manage all maintenance manuals, operating instructions and turn over to the Client
- Produce a final report on the project

## SUMMARY

FEDEMS Ltd has over the years provided services with strategies in line with one single common denominator: **Client Satisfaction.**

At FEDEMS, our motto is **“Consulting for you”**  
Our team of highly skilled professionals will give their best to help in delivering a successful project.





# SOME DESIGN & CONSTRUCTION SUPERVISION WORKS

## 1. THE LAS LIBERTY SCHOOL



**Role: Design Review & Construction Supervision**  
**Project Cost: 2,000,000.00 USD**

## 2. MILLENIUM INSURANCE HEAD OFFICE



**Role: Design & Construction Supervision**  
**Project Cost: 1,200,000.00 USD**

## 3. THE JOSPONG MEDIA HOUSE (NEW METRO TV BUILDING)



**Role: Design & Construction Supervision**  
**Project Cost: 1,500,000.00 USD**



#### 4. HGL FARMS (SILO BASES & ROAD CONSTRUCTION AT ADAKLU)



**Role: Design & Construction Supervision**  
**Project Cost: 3,200,000.00 USD**

## 5. GLOFERT BLENDING PLANT



COMMISSIONING OF GLOFERT BY H.E DR. MAHAMUDU BAWUMIA, THE VICE PRESIDENT OF THE REPUBLIC OF GHANA

**Role: Design Review & Construction Supervision**  
**Project Cost: 3,500,000.00 USD**



## **6. REGIONAL CONSTRUCTION OF THE INTEGRATED RECYCLING AND COMPOST PLANT (IRECOP) FACILITIES**

**ROLE:  
DESIGN, CONSTRUCTION SUPERVISION &  
PROJECT MANAGEMENT**

## INTEGRATED RECYCLING & COMPOST PLANT (IRECOP), KORLE BU, ACCRA



**Project Cost: 5,500,000.00 USD**

### **MATERIAL RECOVERY FACILITY (MRF)**

**Plant Capacity** – 400m<sup>3</sup>/d 16hrs

**Energy Source** – Dual Energy System (Electric Power & Diesel Power)

**M/C Recovery Efficiency:** 75% - 85%

**Energy efficiency:** 65%-75%

**Note:** Compatible for both urban and village (no Electricity application)

**Status:** Project was completed on 3rd April 2019, and the facility is currently in operation.

## LAYOUT OF IRECOP FACILITY AT SUNYANI (70 ACRES)



## CONSTRUCTION OF IRECOP FACILITY - BONO REGION (SUNYANI - NWAASUA)



## LAYOUT OF IRE COP FACILITY AT SEFWI WIAWSO



## CONSTRUCTION OF IRE COP FACILITY - WESTERN NORTH (SEFWI)



## CONSTRUCTION OF IRECOP FACILITY - WESTERN REGION (ASSAKAE)



**CONSTRUCTION OF IRECOP FACILITY - AHAFO REGION (GOASO - AKRODIE)**





## CONSTRUCTION OF IRECOP FACILITY - BONO EAST REGION (TECHIMAN-FIASO)



## CONSTRUCTION OF IRECOP FACILITY - VOLTA REGION (HO)



## CONSTRUCTION OF IRECOP FACILITY - OTI REGION (DAMBAI)



## CONSTRUCTION OF IRECOP FACILITY - NORTHERN REGION (TAMALE)



## CONSTRUCTION OF IRECOP FACILITY - SAVANNAH REGION (DAMONGO)



## CONSTRUCTION OF IRECOPI FACILITY - UPPER WEST REGION (WA)



## CONSTRUCTION OF IRECOP FACILITY - UPPER EAST REGION (BOLGA)



# CONSTRUCTION OF IRECOP FACILITY - NORTH EAST REGION (NALERIGU)





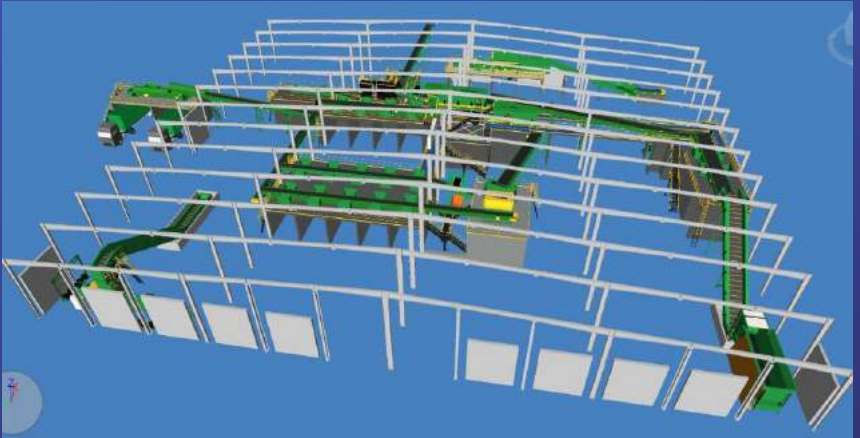
## CONSTRUCTION OF IRECOP FACILITY - EASTERN REGION (EFFIDUASE)



**CONSTRUCTION OF IRECOP FACILITY - CENTRAL REGION (MANKESSIM)**



## 7. EXPANSION OF ACCRA COMPOST AND RECYCLING PLANT



**Role: Project Managers**

### **MATERIAL RECOVERY FACILITY (MRF)**

**Plant Capacity** – 600m<sup>3</sup>/d 16hrs

**Energy Source** – Electricity (Single Source)

**Recovering Efficiency** = 85% - 90%

**Energy Efficiency** = 45%-55%

## 8. 2.NO CELL ENGINEERED LANDFILL SITE - KUMASI



**Role: Design Review and Construction Supervision**

**Plant Capacity** – 200m<sup>3</sup>/t/d 16hrs

**Energy Source** – Dual Energy System

- Electric Power

- Diesel Power

**Note:** Compatible for both urban and village (no Electricity application).

**Status:** project started in 2019 and is currently ongoing.

## 9. KUMASI COMPOST AND RECYCLING PLANT (KCARP)



**Role: Technical Advisors**

### **MATERIAL RECOVERY FACILITY (MRF)**

**Plant Capacity** – 1200m<sup>3</sup>/d 16hrs (two plant set up)

**Energy Source** – Dual Energy System

- Electric power
- Diesel power

**Recovery Efficiency** = 90% - 95%

**Energy Efficiency** = 45% - 55%

**Status:** Installation Completed about to be commissioned.

## 10. DECOMMISSIONING AND RE-ENGINEERING OF KPONE LANDFILL



Role: Design and Supervision

## 11. DECOMMISSIONING AND RE-ENGINEERING OF OTI LANDFILL



Role: Design and Supervision

## 12. ZOOMLION REGIONAL OFFICES



Role: Construction Supervision



### 13. RESIDENTIAL FACILITIES FOR THE COURT OF APPEAL JUDGES - DENYAME, KUMASI



Role: Design and Construction Supervision

## 14. CONSTRUCTION OF COURTS AND BUNGALOWS IN SOME SELECTED COMMUNITIES NATIONWIDE



**Role: Construction Supervision**

**Client: Ministry of Local Government and Rural Development**

## 15. HOSTELS AND TRAINING CENTRE AT THE INSTITUTE OF LOCAL GOVERNMENT SERVICE



Role: Construction Supervision

## 16. OFFICE OF THE HEAD OF LOCAL GOVERNMENT SERVICE



**Role: Construction Supervision**

## 17. CONSTRUCTION OF RESEARCH LAB INSTITUTE | RESIDENCE FOR MALE AND FEMALE PATIENTS | 2 NO. CARETAKERS RESIDENCE



Role: Construction Supervision

## FULL LIST OF PROFESSIONAL PROJECTS UNDERTAKEN

YEAR	PROJECT	CLIENTS
2018	Construction of School Complex	LAS Liberty School
2018	Jospong Media House	Jospong Group
2018	Construction of Warehouse and Road Network	HGL Limited
2018	Design, Consultancy and Supervision	Accra IRECOP
2018	Consultancy Services on Permit Acquisition	JSA Logistics
2018	GIS Mapping of Affected Properties on Pipeline	West Africa Gas Pipeline Project
2018	Design and Supervision of Raod Works	LAS Liberty School Road
2019	Glofert Fertilizer Warehouse	Glofert Limited
2019	Detailed Survey and Design of Internal Road Network	Ghana Water Company Limited
2019	Redevelopment of Eshiem to Manso Railway Line Standard Gauge singke Track Cadastral Surveying	Ghana Railway Development Authority
2019	Design of Subah Offices	Subah Infosolution
2019	Design and Consultancy Servies	Kumasi IRECOP
2019	Assessment and Evaluation of Capacity	Kpone Landfill
2019	Topographical Survey for a Multi-purpose Sports Complex	Frank Acheampong
2019	Supervision and Engineering Services	Kumasi Landfill
2019	Survey Services for Construction of School Facilities	Kuwait Foundation
2019	Supervision of Paving and Renovation Works	Zoompak Ghana Limited
2019	Consultancy and Supervision Services on Construction of Regional Offices	Zoomlion
2019	Project Management Services on Completion of Works	KCARP
2019	Consultancy Services for Drainxage and Road Works	Vehicle Assembly Plant
2020	Topogarpical Survey of Gomoa Akotsi Farm	Greater Accra Poultry Farmers Association
2020	Geotechnical and Survey Works for the Construction of Offices	East Port Side Industrial Project Ghana Ltd.
2020	Evaluation of Pavement and Facility	Yeeco Plastics



## CONTACT US

Block 2, Room 33 Achimota

P.O.Box MB 563 Ministries - Accra

+233 30 285 59919/ +233 54 639 5578

[fedemsltd@gmail.com](mailto:fedemsltd@gmail.com)

[www.fedemsltd.com](http://www.fedemsltd.com)

